

# WR800 CENTER PIVOT



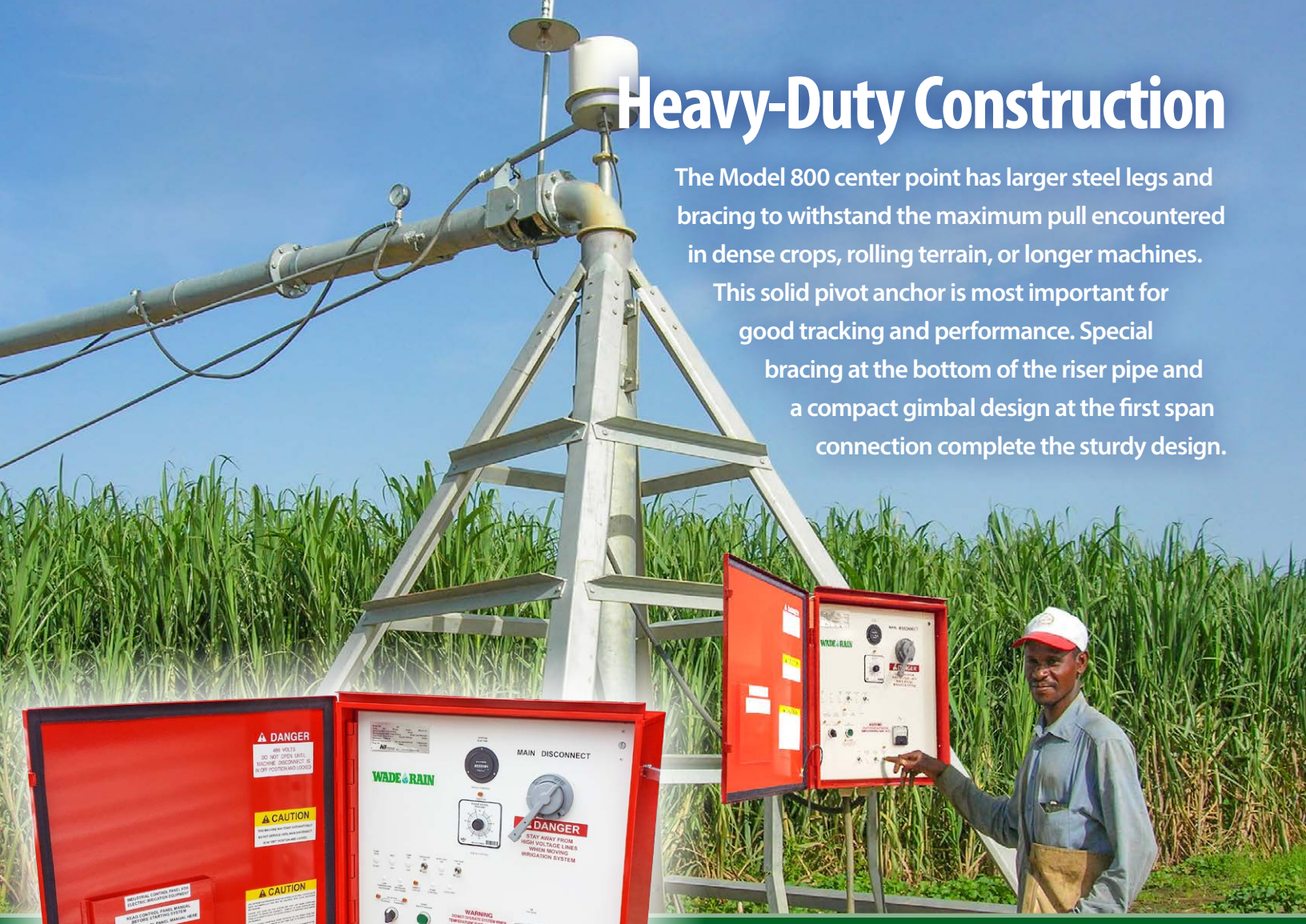
**WADE**  **RAIN**  
**IRRIGATION SYSTEMS**

[www.waderain.com](http://www.waderain.com)

# Heavy-Duty Construction

The Model 800 center point has larger steel legs and bracing to withstand the maximum pull encountered in dense crops, rolling terrain, or longer machines.

This solid pivot anchor is most important for good tracking and performance. Special bracing at the bottom of the riser pipe and a compact gimbal design at the first span connection complete the sturdy design.



## Quality Electronics

**NEMA 4**

The main control panel, tower boxes, and electric cable are all manufactured to all USA National Electric and UL codes and safety standards. The control panel has a NEMA 4 rating (dust and water tight) and is manufactured of galvanized steel with a baked epoxy coating for maximum corrosion protection.

The push button controls are simple and easy to operate. The panel includes speed control, voltage and hour meters for accurate monitoring.

Included at no cost in all Wade Rain Model 800 pivots is a grounding kit with dual grounding rods and a surge protector. This kit complies with the latest U.S. electrical codes to ensure operational and maintenance personnel safety.





## High-Profile Pivot

Designed for sugar cane and other tall crops, the Model 800 SC pivot spans have a ground clearance of 3.8 meters at the lowest point. At this height, the heavy-duty machine can successfully maneuver through the mature sugar cane fields.

For sugar cane applications, the spans can be equipped with low-profile rotators on the top of the spans. The rotators reduce wind distortion of the irrigation pattern and have longer throws which increase the application area for better water penetration.



## Sturdy Span Construction

The Model 800 utilizes heavier materials and stronger joints to overcome the substantial loads placed on longer spans. Truss rod diameters are increased and the ends are hot forged for the strongest connection. This, combined with the improved 3-piece rod connectors, provides increased joint strength.

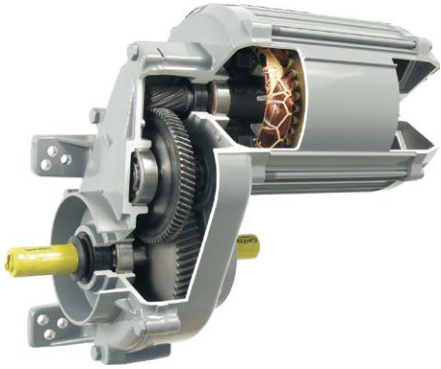
The Model 800 also offers one of the deepest truss cross sections to further strengthen the span. Heavier galvanizing (over 3 mil) and over ball span connections complete the long life design.





# Truck and Tower Assembly

The tower truck main frame is manufactured of 165mm fully galvanized steel tubing. The truck tower has four large angle iron legs that bolt to the 1535mm long span end pipe to form a wide stable base. Heavy-duty cast-iron gear boxes connect the truck to 14.9" x 24" AG new tires.



# Center Drive Motors

Two motor sizes are available; 3/4 HP and 1-1/2 HP. The motors come pre-assembled with a 50:1 gear reduction. This helical drive combination provides 95% efficiency for low energy consumption. They are equipped with three shaft seals and internal bellows.

# End Drive Gear Boxes

The final drive 50:1 gear boxes are constructed to operated in the wet environment. The forged steel shaft is equipped with an outside shield and two internal shaft seals. An internal bellows is also included to reduce the intrusion of water and other contaminants.



Wade Mfg. Co., 9995 SW Avery Street • Tualatin, Oregon 97062  
Tel: 503-692-5353 • Fax: 503-692-5358 • Email: sales@waderain.com • www.waderain.com

